

OUTDOOR SCOREBOARD 8433

Football
Baseball
Track*
Soccer

Tenths, Hundredths and Thousandths digits are only used for Track Applications.



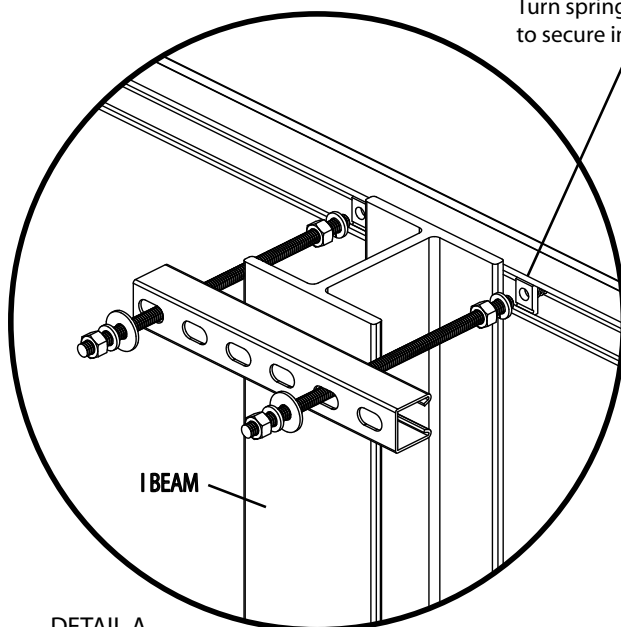
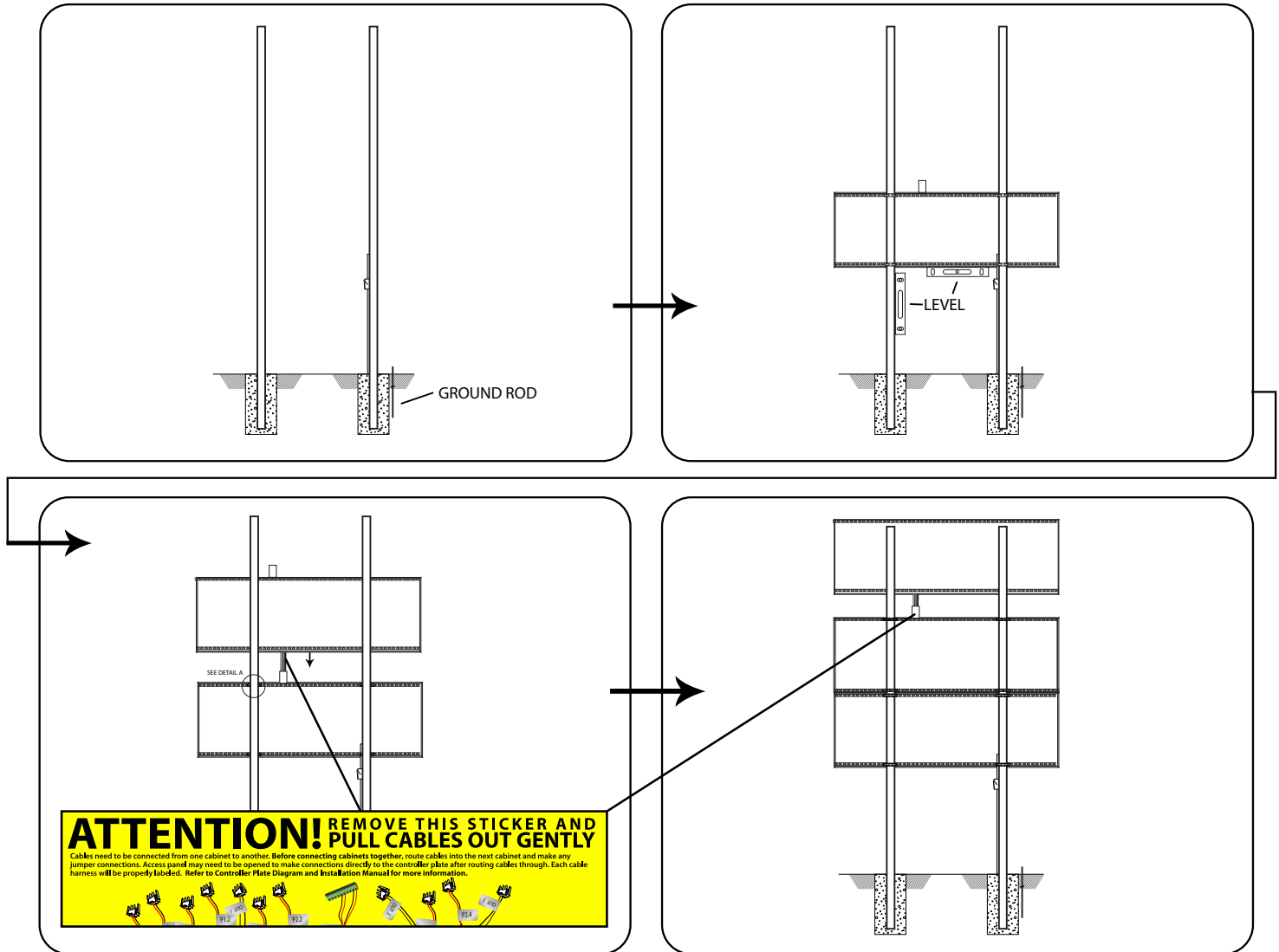
| | | | | | | | | | | |
|--|---|-------|------------|--------|------------|--------|--------------|-------|--------------|-------|
| OVERALL DIMENSION | 11' high x 18' wide x 4.7" deep (including built-in mounting channel). | | | | | | | | | |
| INFORMATION DISPLAYED | Home and Guest Score, Game Time/Track Timer, Time Outs Left, Down, To Go, Ball On, Quarter. | | | | | | | | | |
| DIGITS | 24", 21", 14" Bright Red, 7-Segment LEDs. | | | | | | | | | |
| INDICATORS | 4" Bright Red LEDs, Bull's eye configuration. | | | | | | | | | |
| CAPTIONS | White vinyl letters. | | | | | | | | | |
| HORN | Horn not included. External 100 dB Vibrating Horn or 120dB Trumpet Horn are available. | | | | | | | | | |
| CONSTRUCTION | Extruded aluminum frame, .093" thick, mill finish. Faces made from 22ga galvalume steel with shatter proof polycarbonate windows. Backs made from 22ga galvanized steel. | | | | | | | | | |
| STANDARD COLORS (Custom Colors Available) | <table><tr><td>BLACK</td><td>NAVY</td><td>BLUE</td><td>LIGHT BLUE</td><td>PURPLE</td><td>BURGUNDY</td><td>RED</td><td>FOREST GREEN</td><td>GREEN</td></tr></table> <p>Black, Navy, Blue, Light Blue, and Red have a Kynar® finish, other standard and custom colors are powder coated or painted enamel.</p> | BLACK | NAVY | BLUE | LIGHT BLUE | PURPLE | BURGUNDY | RED | FOREST GREEN | GREEN |
| BLACK | NAVY | BLUE | LIGHT BLUE | PURPLE | BURGUNDY | RED | FOREST GREEN | GREEN | | |
| ELECTRONICS | 100% solid state, microprocessor controlled system. | | | | | | | | | |
| SERVICING | Front access for ease of servicing. Plug in modules for ease of replacement. | | | | | | | | | |
| MICROPROCESSOR CONTROL CONSOLE | Sold separately. Extruded Aluminum, high impact low profile microprocessor control console, latest state of the art, user friendly. Size: 13.25" wide x 5" high x 9" deep. Weight: 6 lbs. Microprocessor to be supplied with 25 feet of cable (hardwire). Microprocessor control console with membrane keyboard provides for direct entry of all information. Radio Control is available. | | | | | | | | | |
| JUNCTION BOX | One outdoor rated junction box, 5" x 3" with cover and ethernet cable. (Hardwire) | | | | | | | | | |
| DATA CABLE | Twisted pair, direct burial, RJ45 Connectors (Hardwire). | | | | | | | | | |
| POWER REQUIREMENTS | 115/230 VAC. 50/60 Hz. Minimum one 20A circuit is recommended. | | | | | | | | | |
| INSTALLATION | All standard variations typically installed on two posts. Mounting kits are supplied with scoreboard. <i>NOTE: Number of posts must be determined locally by licenced engineer.</i> | | | | | | | | | |
| WEIGHT | Net 800 lbs / Shipping 1270 lbs. | | | | | | | | | |
| WARRANTY | Five year guarantee against defects in materials and workmanship. Factory repair service for parts in warranty. Union label. UL Certified. | | | | | | | | | |

STANDARD VARIATIONS

| | |
|--|--|
| Model + RV2 | Radio upgrade. 2.4 GHz spread spectrum, 1500' expected range. |
| SPORT CONVERSION KITS - Optional changeable placards to display correct captions for different sports (lower section) | |
| Baseball Conversion | Ball, Strike, Inning, Out - Inning is displayed in 3rd position to allow for extra innings |
| Track Conversion | Lane, Place, Event, Heat |
| Soccer Conversion | C. Kicks (up to 9), SOG, SOG, C Kicks (up to 9) |

Typical Double-Cabinet Scoreboard Installation Illustration

NUMBER OF POLES SHOWN ONLY FOR REFERENCE. MUST BE DETERMINED LOCALLY BY LICENCED ENGINEER.

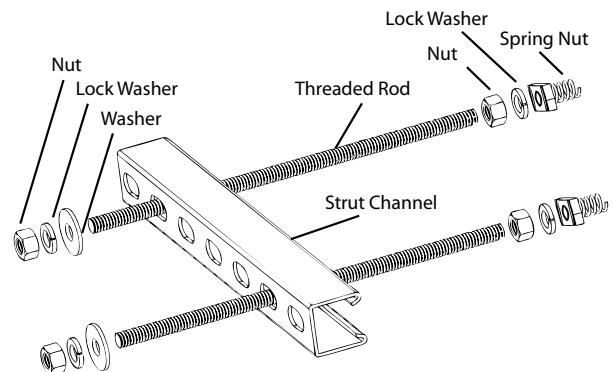


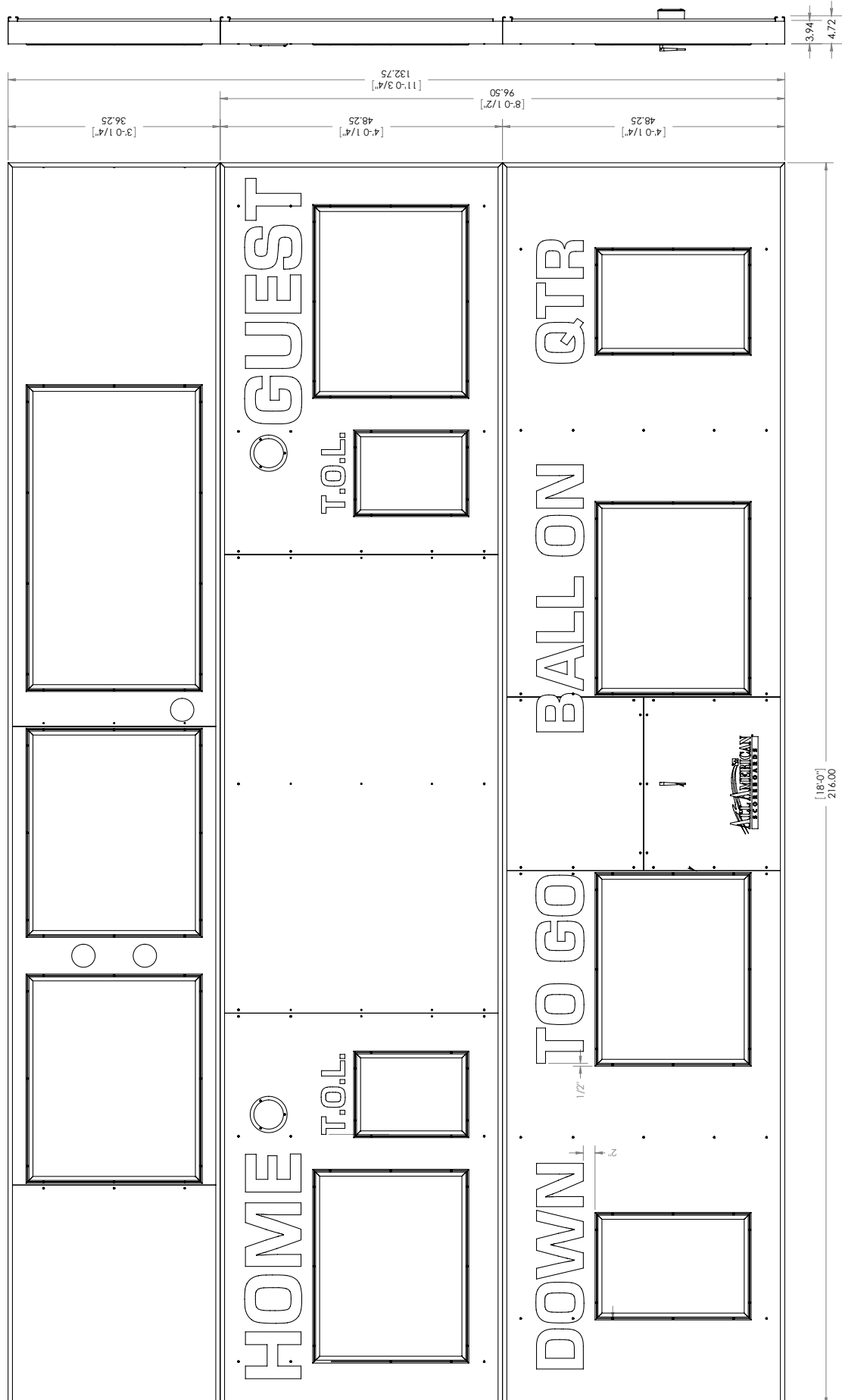
DETAIL A.
Pressure hold scoreboard cabinets to poles.
Secure with weld.

Turn spring nuts clockwise
to secure into strut channel.

Mounting Kit

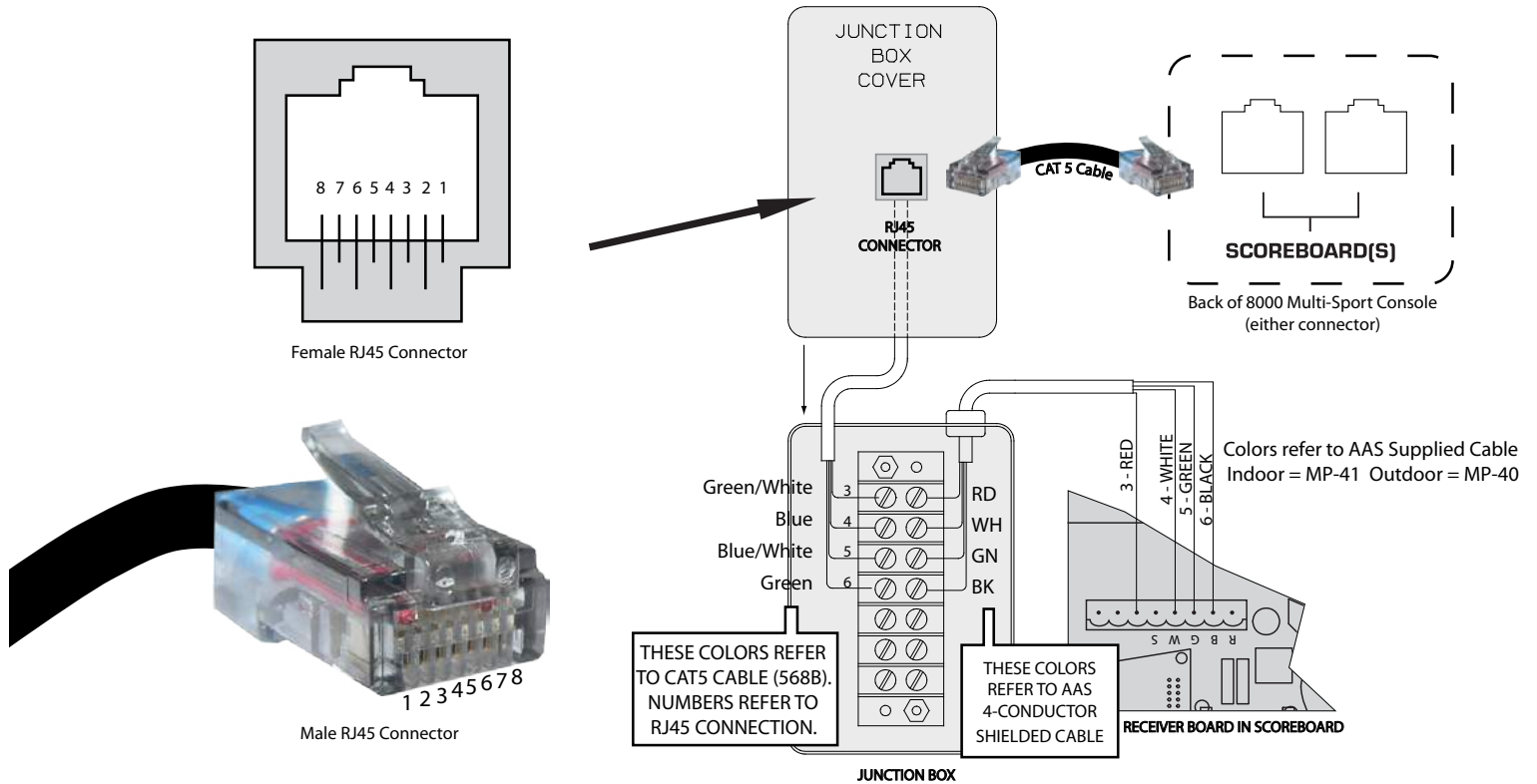
Quantity of kits depends on board and number of poles required.
Installed at every point where a pole and a strut channel intersect.
Local ordinances, soil conditions and wind load requirements may require additional structure.





Hardwire Scoreboard Wiring

With a Standard Junction Box



Wiring a Supplemental Display

With a Single Junction Box

